



**PETER DEILMANN CRUISES**

MS Deutschland

**\$99 Round-trip  
Air And More!**



*Georg Friedrich Händel*

# *Baroque Music Festival at Sea*

*Celebrating the 250th Anniversary of Georg Friedrich Händel*

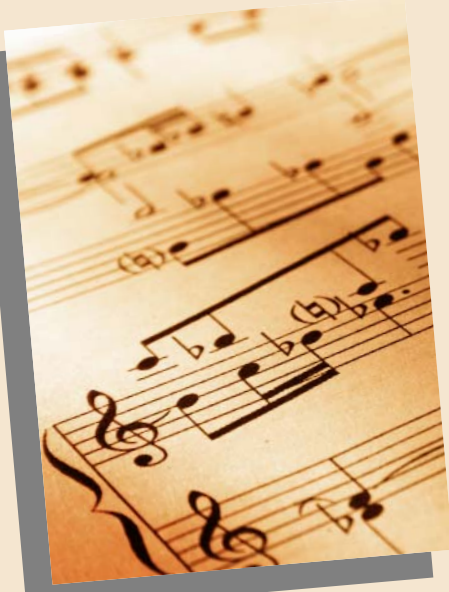
**May 21 - June 3, 2009**

GERMANY • ENGLAND • SCOTLAND • IRELAND • BELGIUM

# Baroque Music Festival at Sea

**Voyage 316** May 21 - June 3, 2009  
(13-nights)

Treat yourself to a fresh appreciation of the Classics aboard the ultra deluxe 513-passenger MS Deutschland. This Baroque Music Festival, commemorating the 250th anniversary of the death of Georg Friederich Handel, will be a voyage to remember. Guests will be able to enjoy special performances while onboard and on land. This extraordinary international musical program is provided to you at no additional cost to the price of your cruise. Deilmann's Grand Hotel, for this cultural must, departs May 21, 2009 and explores Great Britain, Ireland and Western Europe on a 13-night sojourn.



**THOMAS SEEDORF**  
Lecturer

Prof. Thomas Seedorf is a renowned expert on Händel and an accomplished vocalist.



**NACHUM ERLICH**  
Violin

Prof. Nachum Erlich will conduct a Händel ensemble of three musicians performing on string instruments.



**CHRISTIAN RUVOLO**  
Piano & Harpsichord

Prof. Christian Ruvolo from Milan, Italy will perform on the piano and on the harpsichord.



**WOLFGANG MEYER**  
Clarinet

Prof. Wolfgang Meyer is a member of the Trio di Clarone together with his sister Sabine Meyer.



# Georg Friedrich Händel



Georg Friedrich Händel

When Georg Friedrich Händel died in 1759, his name was known in all of Europe. In contrast to his famous contemporary Johann Sebastian Bach who was born at the same time and who hardly left the narrow boundaries of Thuringia and Saxony, Händel started to travel the world at a young age. From his birth town Halle at the Saale River his path led him to the Opera in Hamburg from where he moved to Italy for several years just to celebrate triumph after triumph in the South. Via Hanover, Händel finally traveled to London, his new adopted country. As George Frederic Handel he became one of the English national composers and he found his last resting place in Westminster Abbey.

A small festival with musicians of the University for Music in Karlsruhe follows Händel's footsteps with three moderated concerts:

- Händel in Germany
- Händel in Italy
- Händel in London

In varied sequences, you can listen to arias from operas, oratorios and cantatas as well as instrumental compositions including such famous works like "Water Music" or the aria "Lascia ch'io pianga" from the opera "Rinaldo", but also less often performed pieces which have one common thread: they are just as entertaining as they are moving, brilliant and beautiful - expressions of one of the greatest geniuses of music history.

## Hamburg Round-trip Highlights

Spend three fabulous days in London, England, and visit famous sites like Buckingham Palace, Big Ben and attend a choice of evening performances with the London Symphony, Royal Philharmonic or L'Elisir D'Amore at the Royal Opera House. Aberdeen, Scotland, is next with gorgeous Victorian houses while Ullapool awaits with pretty mountain views. Enjoy two enchanting days in Dublin, Ireland. In Cobh, visit the Cathedral of St. Colman. After a relaxing day at sea, Medieval Brügge, Belgium, awaits. Your cruise ends in the German Hanseatic City of Hamburg. This modern bustling city offers a plentiful array of museums, art galleries and theaters. In each port of call, enjoy an "English Language Only" shore excursion as our guest.



### Voyage 316 Day-by-Day Itinerary

Date	Port	Arrive	Depart
5/21/09	Hamburg, Germany/Embark		6:00pm
5/22/09	At Sea		
5/23/09	London, England	1:00am	
5/24/09	London, England		
5/25/09	London, England		2:30am
5/26/09	Aberdeen, Scotland	8:00am	5:00pm
5/27/09	Ullapool, Scotland	12Noon	7:00pm
5/28/09	Dublin, Ireland	6:00pm	
5/29/09	Dublin, Ireland		6:00pm
5/30/09	Cobh, Ireland	7:00am	7:00pm
5/31/09	At Sea		
6/1/09	Brugge, Belgium	9:00am	9:00pm
6/2/09	At Sea		
6/3/09	Hamburg, Germany/Disembark		(7:00am arrival)

### Special Amenities

- \$99 air\* from 73 North American cities
- Includes a package of pre-arranged shore excursions valued up to \$725 per person. (Includes choice of three evening performances in London).
- Transfers to and from the ship are provided with the payment of our \$99 package (day of embarkation / disembarkation only)
- Air allowance of \$750 per person (in lieu of \$99 package)

# Baroque Music Festival Highlights

Voyage 316 • May 21 - June 3, 2009 • 13-nights

## Day by Day Program

### **Saturday 5/23/09 LONDON, ENGLAND - London Panorama Tour**

Sights you will see include the Tower of London, the London Eye, Westminster Abbey, Whitehall, Parliament, Big Ben, St. Margaret's Church, Buckingham Palace, St. James' Palace, Clarence House, National Art Gallery, Oxford Street, Piccadilly Circus and Hyde Park. Afterwards, you return to the MS Deutschland at the Tower Bridge.

### **Sunday 5/24/09 LONDON, ENGLAND - Buckingham Palace**

Buckingham Palace serves as the official London residence of Her Majesty The Queen and is the busy administrative headquarters of the British Monarchy. Equipped with an audio guide, you walk up the curving marble stairs to the second floor and, at your own pace, tour the Green-, Blue- and White Drawing Room, the Throne Room and the Gallery with masterpieces of Rembrandt and van Dyck. Investitures, such as the Accolade of Knighthood, are held in the Victorian Ballroom. This evening Deilmann invites you to attend the theater.

**Choose from the a-la-carte menu below to attend one of these three London evening performances.**

**1) Venue\*: Royal Festival Hall - 7:30pm**

**Royal Philharmonic;** Conductor: Leonard Slatkin • Piano: Katia and Marielle Labèque

*Performances: Copland - Appalachian Spring Suite • Gershwin - Rhapsody in Blue • Mussorgsky - Pictures at an Exhibition (orch. Ravel)*

**2) Venue\*: Barbican Hall - 7:30pm**

**London Symphony Orchestra;** Conductor: Sir Colin Davis • Violin: Nikolaj Znaider

*Performances: Elgar - Introduction and Allegro for Strings • Stavinsky - Orpheus • Brahms - Violin Concerto, Op 77*

**3) Venue\*: Royal Opera House - evening performance**

*Performance: L'Elisir D'Amore*

*\*While we can not guarantee any of these three programs, we would be happy to note your preference if provided by January 31, 2009*

### **Tuesday 5/26/09 ABERDEEN, SCOTLAND**

Nicknamed the Granite City, Aberdeen's Victorian architecture is comprised of magnificent homes and buildings built from granite. In Union Street, the city's main street, you will discover notable buildings such as the Town and County Bank, the Music Hall, the shopping mall and the National Bank of Scotland. Castle Street boasts the magnificent 19th-century Town House. You can also explore the Aberdeen Maritime Museum with a fascinating collection of ship models and paintings or visit the Marischal Museum that contains approximately 80,000 pieces of fine art and archaeology.

### **Wednesday 5/27/09 ULLAPOOL, SCOTLAND - Gruinard Bay and Measach Falls**

The tour takes you along the shores of Loch Broom into the country's heartland to Corrieshalloch, where you see the breathtaking 60 m (200 ft) deep gorge. The tour continues through the Dundonnell Forest to a countryside very typical for the Northwest Highlands with vast open and unsettled areas. After some leisure time and a stroll along the beach you return through enchanting countryside to Ullapool.

### **Friday 5/29/09 DUBLIN - Dublin city tour**

A sightseeing tour takes you through the capital of Ireland, a buzzing and thriving city, to many lovely places and parks including the northern bank of the river Liffey, the old Custom House, the former Parliament House, which today houses the Bank of Ireland, and Trinity College. You have the opportunity to take pictures of the "Doors of Dublin" before you drive to the Catholic St. Patrick's Cathedral, an impressive gothic structure.

### **Saturday 5/30/09 COBH - Jameson Heritage and Middleton**

The tour takes you east to Middleton, a bustling market and business town with the famous Jameson Heritage Center. During a 1-hour audio-visual tour you will walk through the original buildings of the distillery, see the world's largest copper distillation tank and hear the secrets of Irish whiskey. Take in the sweet smells of malted barley and the strong smells of alcohol before completing your visit with a well-earned whiskey tasting session and some free time. Afterwards, you stroll to the city center of Middleton which was built around a Cistercian monastery founded in the 12th century by monks from Burgundy.

### **Monday 6/1/09 BRUGGE - Brugge and Canal Boat Tour**

A 30-minute bus ride takes you to the historic heart of Bruges, a UNESCO World Heritage Site since 2000, which charms visitors with medieval street patterns, small picturesque canals, and leafy fortifications. Other highlights you see include the quaint Gothic Town Hall on Burg square, the richly decorated Old Civil Registry, and the Chapel of the Holy Blood, named after its most precious relic, a bottle containing a few drops of Christ's blood.

*NOTE: Shore excursions as described are complimentary and are subject to change; package value at \$725 pp*



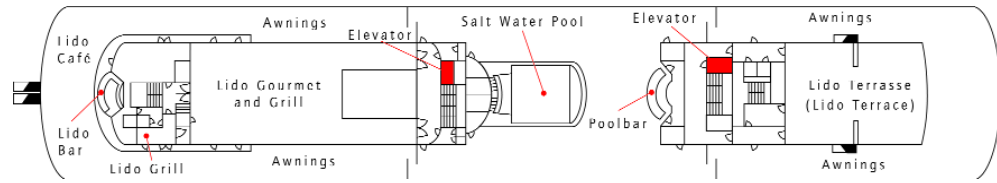


London, England

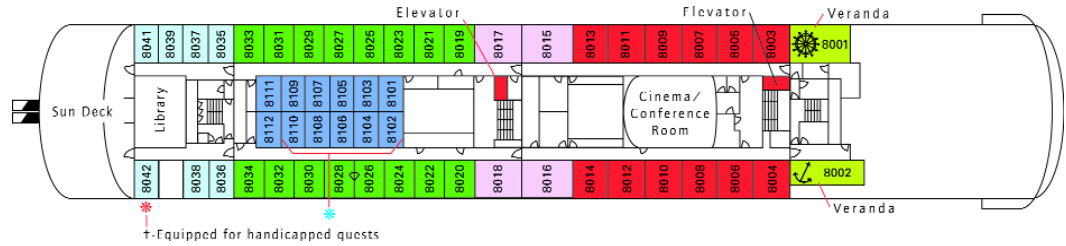


# MS Deutschland Deck Plans

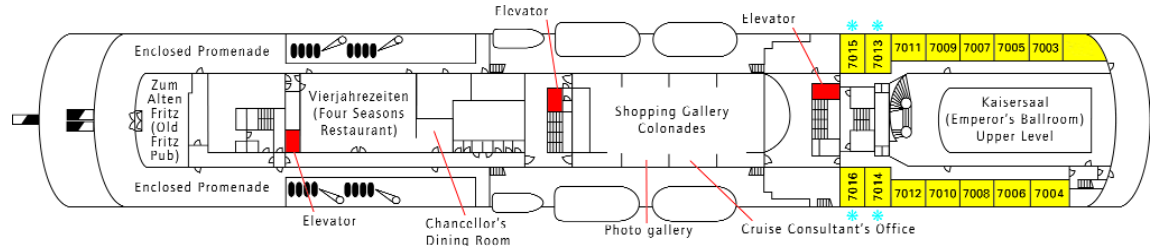
## Deck 9 LIDO DECK



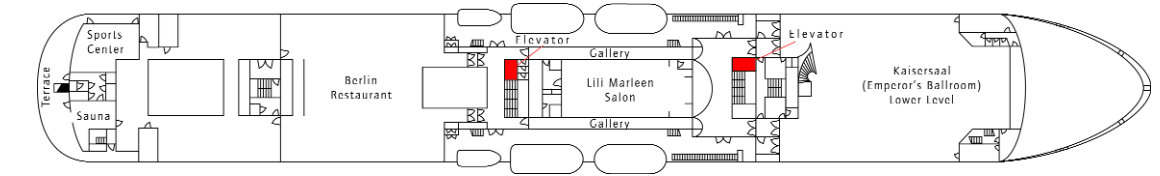
## Deck 8 ADMIRAL DECK Cabins No. 8001 to 8042 (outside) Cabins No. 8101 to 8112 (inside)



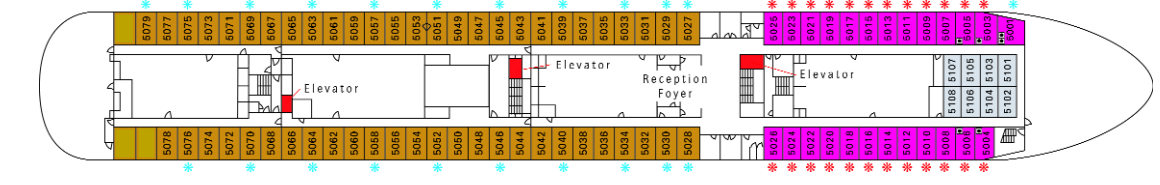
## Deck 7 COMMODORE DECK Cabins No. 7001 to 7016 (outside)



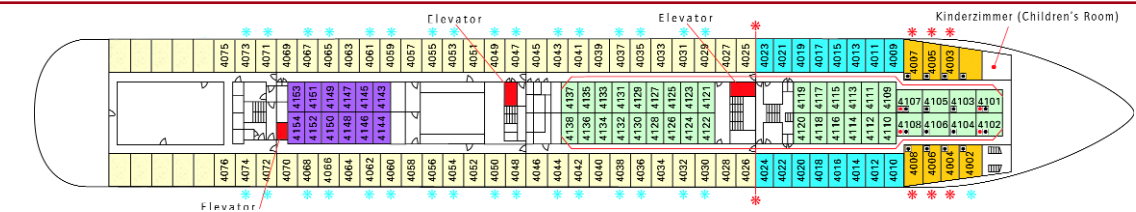
## Deck 6 DEUTSCHLAND DECK



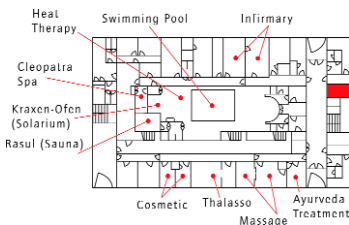
## Deck 5 CAPTAIN'S DECK Cabins No. 5001 to 5082 (outside) Cabins No. 5101 to 5108 (inside)



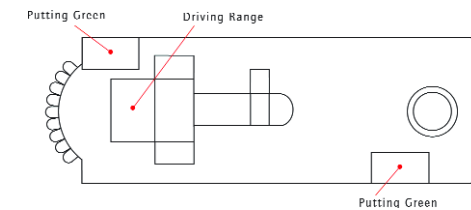
## Deck 4 STUEMANN'S DECK (Quartermaster's Deck) Cabins No. 4001 to 4086 (outside) Cabins No. 4101 to 4154 (inside)



## Deck 3 KUR DECK (Deutschland Wellness Spa)



## Deck 10 GOLF DECK



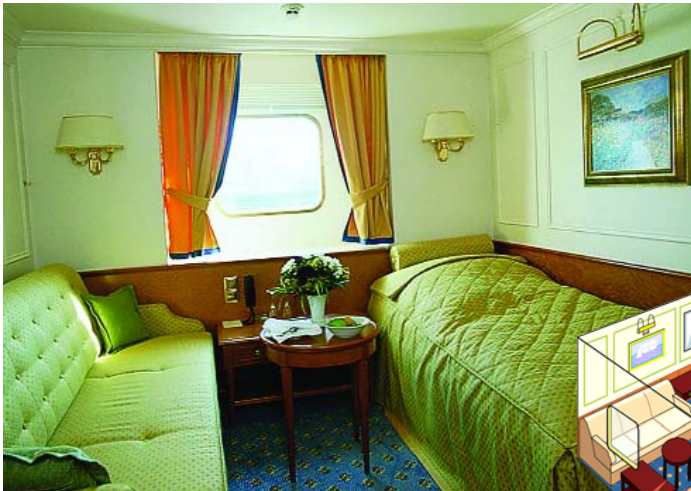
MS Deutschland Specifications	
Maiden Voyage:	May 1998
Gross Tonnage:	22,400
Dimensions:	Length: 574 ft./175m Width: 82 ft./25m Draft: 18ft. 4 inch/5.6m
Country of Registry:	Germany
Passengers:	520 maximum
Staff: International:	280
Officers:	German

### Notes

- ◼ Available as Triple
  - ◻ Available as Quad
  - \* Cabin with one twin bed and one sofa bed
  - \* Double cabin with twin beds
  - + No Smoking inside except in the Old Fritz Pub
- All unmarked cabins have one Queen size bed.  
All inside cabins have separate twin size beds.  
Cabins 5051 and 5053, and 8026 and 8028, have interconnecting doors.



# Staterooms and Pricing



Grade C,D,G  
(Single and Twin Cabins)



Cruise Rates* (per person)			
Category	Cabin	Deck	Price
A	Twin Inside	4	\$5,840
B	Single Inside	4	\$6,640
C	Twin Outside	4	\$7,110
D	Single Outside	4	\$8,550
E	Twin Outside	4	\$7,650
F	Single Inside	5	\$7,650
G	Twin Outside	5	\$7,650
H	Twin Outside	5	\$8,440
I	Twin Outside	7	\$8,910
K	Twin Inside	8	\$7,880
M	Twin Outside	8	\$9,440
N	Twin Outside	8	\$10,400
O	Twin Outside	8	\$12,170
P	Twin Outside	8	\$13,610
	Executive Suite	8	\$15,060
	Owner's Suite	8	\$16,690

\*Port Charges \$125 per person additional; \$99 transatlantic air is available in conjunction with MS Deutschland cruise from your choice of 73 North American gateways; business class upgrades available for \$2,800 pp; transfers to/from airport and vessel included with purchase of \$99 air program on day of embarkation/disembarkation only; deduct \$750pp from cruise-only price in lieu of \$99 air program; pre-packaged shore excursions also included with purchase of cruise. Air taxes and fuel air surcharge additional (currently \$435pp); Ship fuel surcharge an additional \$130 pp.



Grade E, H, I, M  
(Twin or Queen bed)



## \$99 Air/Sea Inclusive Gateway Cities\*

### ZONE 1

Albany, NY  
Allentown, PA  
Atlanta, GA  
Baltimore, MD  
Boston, MA  
Buffalo, NY  
Charlotte, NC  
Ft. Lauderdale, FL  
Harrisburg, PA  
Hartford, CT  
Jacksonville, FL  
Miami, FL  
Montreal, Quebec, Canada  
Myrtle Beach, SC  
New York, NY  
Orlando, FL  
Philadelphia, PA  
Pittsburgh, PA  
Providence, RI  
Raleigh, NC  
Rochester, NY  
Savannah, GA  
Tampa, FL  
Washington, DC

### ZONE 2

Austin, TX  
Cedar Rapids, IA  
Chicago, IL  
Cincinnati, OH  
Cleveland, OH  
Dallas, TX  
Des Moines, IA  
Detroit, MI  
El Paso, TX  
Houston, TX  
Indianapolis, IN  
Kansas City, MO  
Lincoln, NE  
Little Rock, AR  
Louisville, KY  
Memphis, TN  
Milwaukee, WI  
Minneapolis, MN  
Nashville, TN  
New Orleans, LA  
Oklahoma City, OK  
Omaha, NE  
San Antonio, TX  
St. Louis, MO  
Tampa, FL  
Toronto, Ontario, Canada  
Wichita, KS

### ZONE 3

Albuquerque, NM  
Billings, MT  
Boise, ID  
Calgary, Alberta, Canada  
Denver, CO  
Honolulu, HI  
Las Vegas, NV  
Los Angeles, CA  
Oakland, CA  
Orange County, CA  
Palm Springs, CA  
Phoenix, AZ  
Portland, OR  
Reno, NV  
Sacramento, CA  
Salt Lake City, UT  
San Diego, CA  
San Francisco, CA  
San Jose, CA  
Seattle, WA  
Tucson, AZ  
Vancouver, British Columbia, Canada



Grade O (Suite)



**AVAILABLE IN ALL CABINS:** Handsome burl wood surfaces • Air-conditioning with individual comfort regulator • Italian marble bathroom with shower (bathtub and shower in suites) • Color television and radio • Minibar • Hair dryer • Bathroom outlet (110/230v, 60 Hz) • European-style duvets and pillows • Bathrobes • Slippers • Safe deposit box • Telephone (internal and satellite)

## *Terms and Conditions*

The terms and conditions of Peter Deilmann's Ocean liner,  
*MS Deutschland*, apply in their totality.

See pages 60 and 61 of the  
2009-2010 *Grand Hotel Voyages* brochure for details  
(available at [www.deilmann-cruises.com](http://www.deilmann-cruises.com)).

**PETER DEILMANN CRUISES**



---

*The World is New Again*